

A Guide to Flickr

Updated 16 August 2022



A Guide to Flickr



- Open your account
- Joining the Club Flickr Group
- Adding photos to Flickr
 - from a desktop
 - from the Phone/tablet app
- The monthly Flickr competition
 - from a desktop
 - from the Phone/tablet app
- The once-a-week Group

Open your Flickr Account



- If you don't already have an account, go to:

<https://www.flickr.com/>

- In the top right hand corner you will see a “Sign Up” button
- Click this and follow the instructions

Joining the Camera Club Group



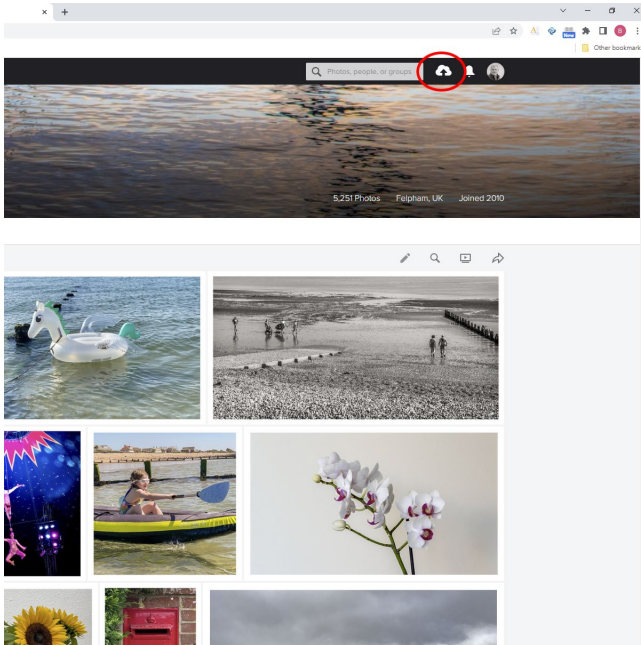
- Once you have opened your account, go to:

<https://www.flickr.com/groups/bognorregiscc/>

- Click the “Join” button in the upper panel (to the right of the club name)
- This will then send a message to the Group admin team, who will authorise your membership of the group
- Once a member, you can go straight to this Group, which will now be added to your “Groups” list



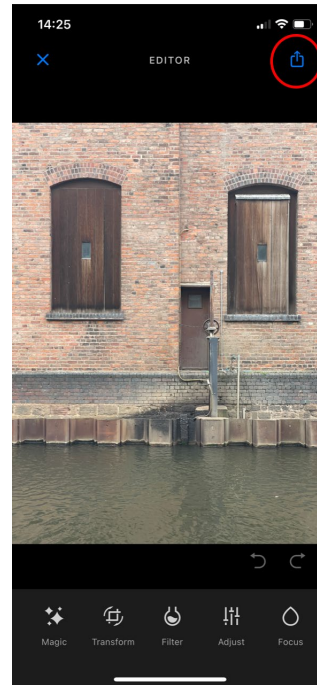
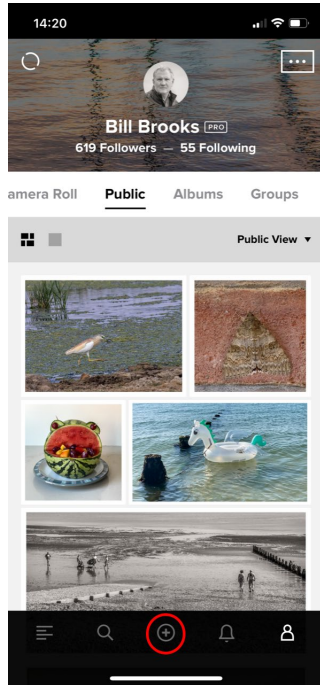
Adding Photos (from a desktop/laptop)



- Click the cloud-shaped icon circled in red (see photo left)
- Click “Choose photos and videos to upload”
- Selected your file(s)
- Click “Open”
- Click the blue “Upload” button (screen top right)
- Titles and comments can be added either before uploading or afterwards



Adding Photos (from the Flickr phone/tablet app)



- Click the “+”icon circled in red (see photo left)
- Select your file(s)
- Press “Next”
- Select the upload icon (see photo right)
- Add title and/or description
- Click “Share” box in top left



Adding Photos to the Camera Club Group

- From your Photostream, click on the desired picture
- From either the desktop or the app, you will see an “add to Group” option below the picture
- Select the Group(s) that you wish to add to

- You cannot add to the club (or other) Group from within the Group page



The monthly Flickr competition

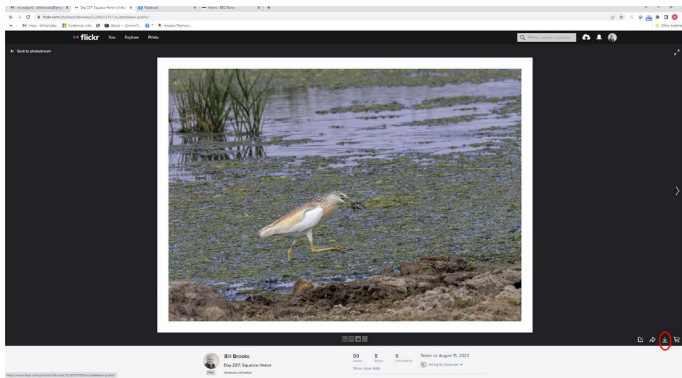
- The club holds a monthly competition, for which a new theme is set each month
- You can enter up to three images each month
 - these images can also be used in any other club competition
- A certificate is issued for each month's winner and presented at the next club meeting

- To find the competition, go to the club's Group page on Flickr
- Click on the "Discussions" tab
- You will then see a list of competitions
- Choose the latest one



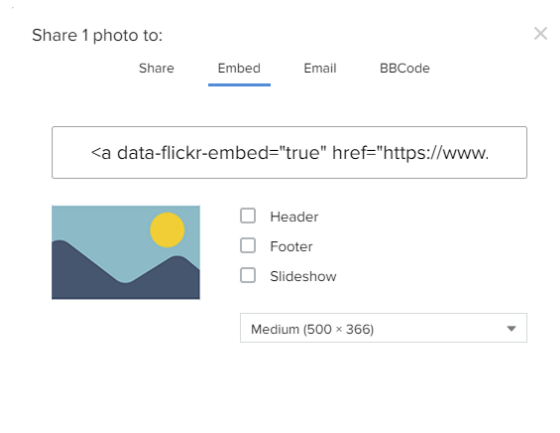
Adding Photos to the Competition (from a desktop/laptop)

- Go to your “Photostream” and select the picture you wish to enter
- Click the small curved arrow to the bottom right of the screen (see photo, left)





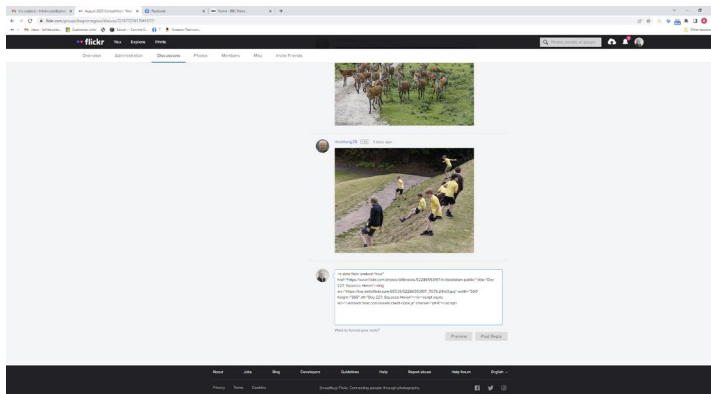
Adding Photos to the Competition (from a desktop/laptop)



- Go to your “Photostream” and select the picture you wish to enter
- Click the small curved arrow to the bottom right of the screen (see photo, left)
- Make sure you choose the “Embed” tab
- Highlight all the text in the box and Copy it



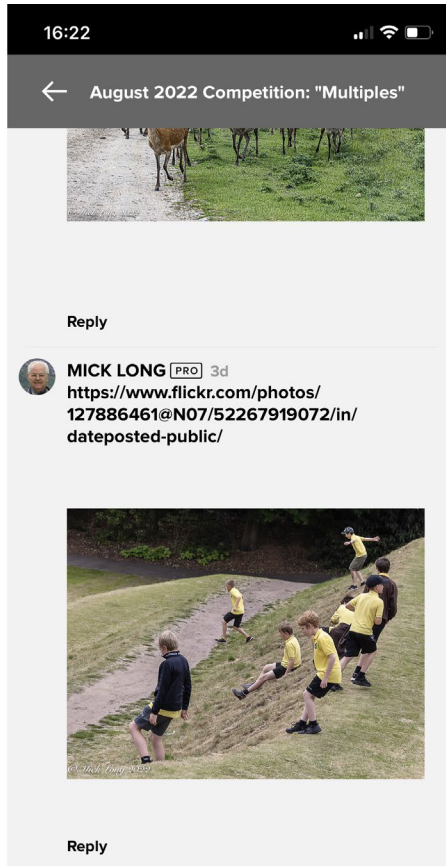
Adding Photos to the Competition (from a desktop/laptop)



- Go to your “Photostream” and select the picture you wish to enter
- Click the small curved arrow to the bottom right of the screen (see photo, left)
- Make sure you choose the “Embed” tab
- Highlight all the text in the box and Copy it
- Go back to the competition page and select the first empty Discuss thread at the bottom of the column of images
- Paste the string of text you have copied into the box and press Enter
- Click the “Post Reply” button



Adding Photos to the Competition (from the app)



[<https://flic.kr/p/2nEFt8R>]



- Select your image and press the share arrow at the bottom of the screen
- Select “Copy url”
- Go to the camera club Group from your “Groups” list
- Click on the Discussions tab
- Click on the latest competition thread
- Go to the bottom of the list of entries
- Paste the url in the “Post a Comment” area
- Now add square brackets around the url
- Press the upload arrow to the right of the bracket url



The club “once-a-week” Group

- The club has a separate group for members who wish to upload a “picture-of-the-week” throughout the year
 - this will help develop your skills to “see” new opportunities
 - members comment on each others pictures, so good feedback can be received
 - and it’s fun!

- To join this, go to:

<https://www.flickr.com/groups/14758622@N25/>

- Click the “Join” button in the upper panel (to the right of the club name)
- This will then send a message to the Group admin team, who will authorise your membership of the group
- Once a member, you can go straight to this Group, which will now be added to your “Groups” list